

UNDER

UNDERGROUND ELECTROMECHANICAL GEAR MOTOR FOR SWING GATES WITH LEAVES UP TO 3,5 m, 24 Vdc AND 230 Vac



PLUS

New shell compatible with other producers' foundation boxes

New unlock lever with key and integrated pull lever

Opening and closing mechanical stops included

Adjustable speed and slowdown functions

24 Vdc motor without encoder

Possibility to choose between 1.5 m and 10 m cable motor (for 230 Vac)

New foundation box CF3

UNDER FAST: opening speed at 90° in 10 seconds * **FASTLINE**

Compatible with 24Vdc control unit 14AB2, (pag.132 for technical details)

Compatible with 230Vac control unit CT202, (pag. 137 for technical details)



High precision mechanical stops



Bronze and tempered steel internal gears for maximum reliability






Internal and external unlock with special metal key




Easy maintenance thanks to the double greasers both on housing and gear motor

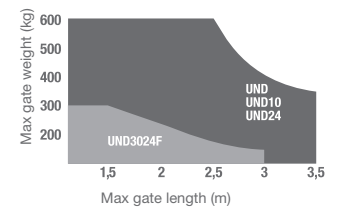
* slow down phase excluded

MODELS

CODE	DESCRIPTION	PCS PALLET
UND	For swing gates with maximum length 3,5 m, 230 Vac motor, with opening and closing mechanical stops. Cable length 1.5 m (1 pc)	36
UND10	For swing gates with maximum length 3,5 m, 230 Vac motor, with opening and closing mechanical stops. Cable length 10 m (1 pc)	36
 UND24	For swing gates with maximum length 3,5 m, 24 Vdc motor, without encoder, with opening and closing mechanical stops (1 pc)	36
 UND3024F	For swing gates with maximum length 3 m, 24 Vdc motor, with encoder, with opening and closing mechanical stops (1 pc)	 36

		UND	UND10	UND24	UND3024F
MECHANICAL DATA					
torque	Nm	300	300	250	150
working cycle	%	30	30	80	50
opening time at 90°	sec	20	20	18-25	10-15
ELECTRICAL DATA					
control board		CT202	CT202	14AB2	14AB2F 
power	Vac	230	230	-	-
	Vdc	-	-	24	24
consumption	A	1	1	5	5
absorbed power	W	230	230	120	120
capacitor	µF	10	10	-	-
thermoprotection	°C	150	150	-	-
GENERIC DATA					
protection degree	IP	67	67	67	67
dimensions (L - D - H)	mm	412 - 346 - 160	412 - 346 - 160	412 - 346 - 160	412 - 346 - 160
weight	kg cad	11	11	10,8	10,8
working temperature	°C	-20 + 55	-20 + 55	-20 + 55	-20 + 55
leaves maximum weight	Kg	600	600	600	500

LIMIT USE



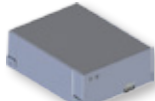
Gate shape and height and weather conditions can considerably reduce the values shown above, in the graph. 230 Vac motors are suggested for windy areas

ACCESSORIES



ELS-C
Horizontal 12 V electrolock

PC 1



KBP
Battery back-up kit

PC 1



KITFIXBATT
Fixing batteries brackets

PC 1



SB3
Unlock lever with key

PC 1



OP100
Kit for over 100° opening. Leaf length max 3000 mm

PC 1



ADUN
Fixing kit for other producers' boxes

PC 1



CF3 *
Cataphoresis housing box with connecting levers

PC 1



CI3 *
Stainless steel housing box, with connecting levers

PC 1



CF2SB *
Cataphoresis housing box, without connecting levers

PC 1



14AB2
Control unit in box for two 24 Vdc motors

PC 1



14AB2F
Control unit in box for two 24 Vdc motors (only UND3024F)

PC 1



CT202 24
Control unit in box for two 24 Vdc motors (only UND24)

PC 1



CT202
Control unit in box for two 230 Vac motors

PC 1



TS
Warning board

PC 1

* 36 PCS PALLET